

Figure 1: The NetPacket::Ethernet Frame Format

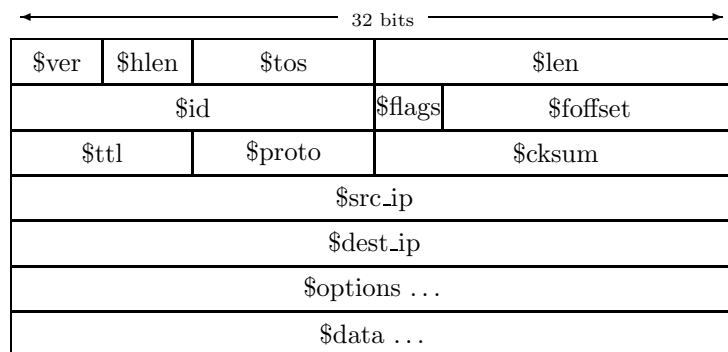


Figure 2: The NetPacket::IP Datagram Format

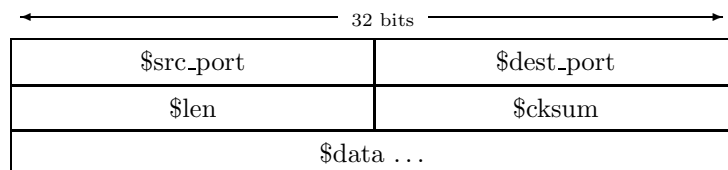


Figure 3: The NetPacket::UDP Datagram Format

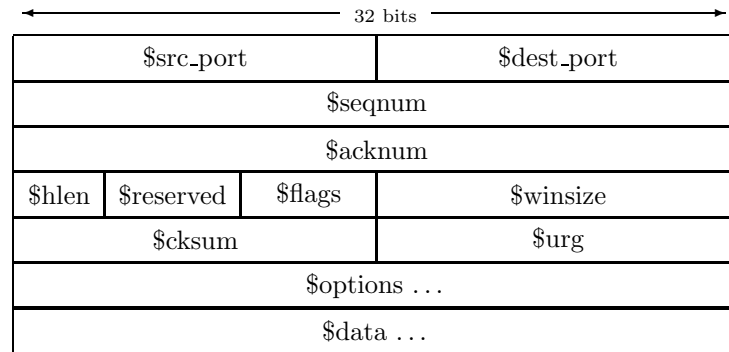


Figure 4: The NetPacket::TCP Segment Format

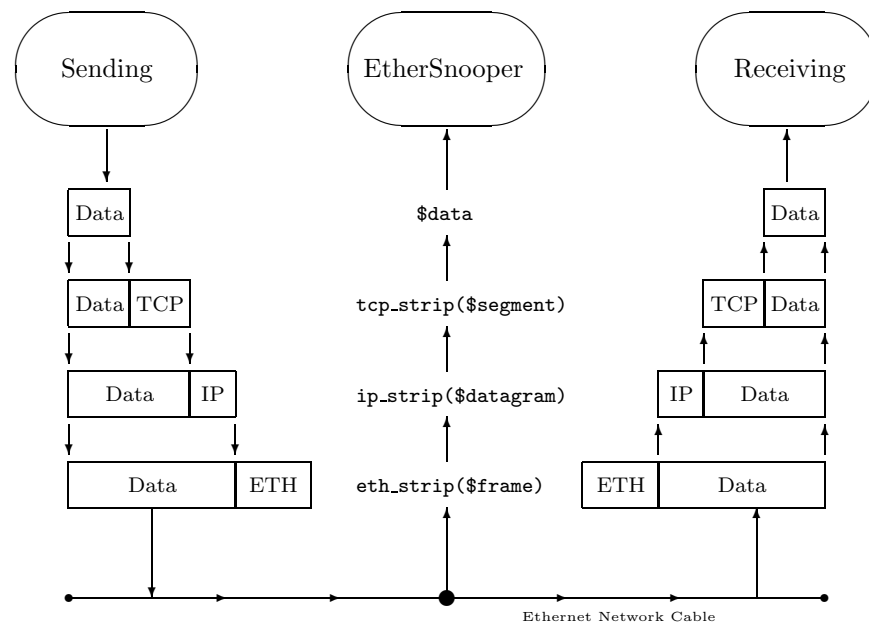
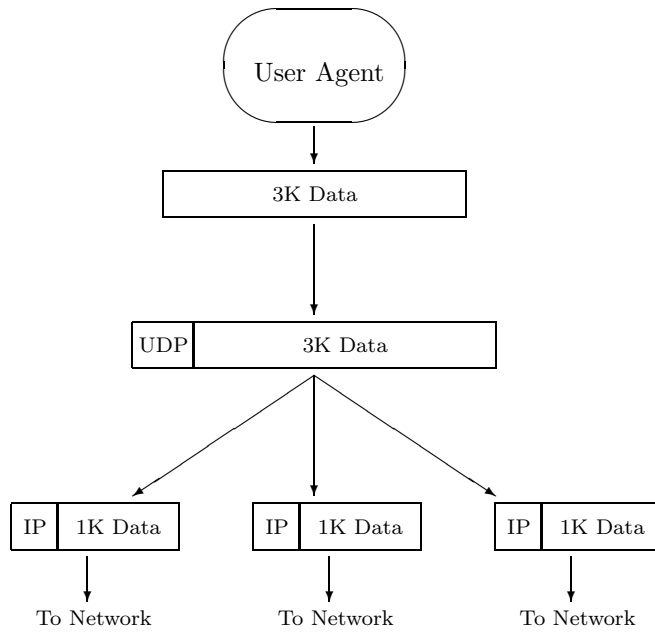
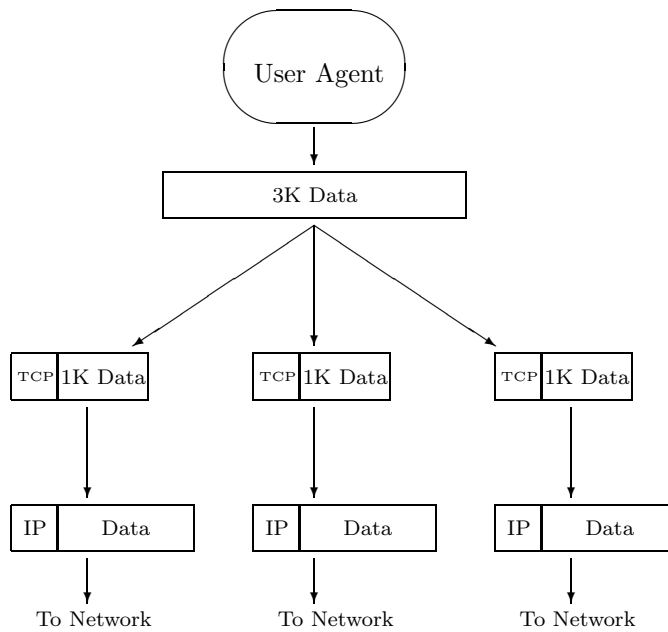
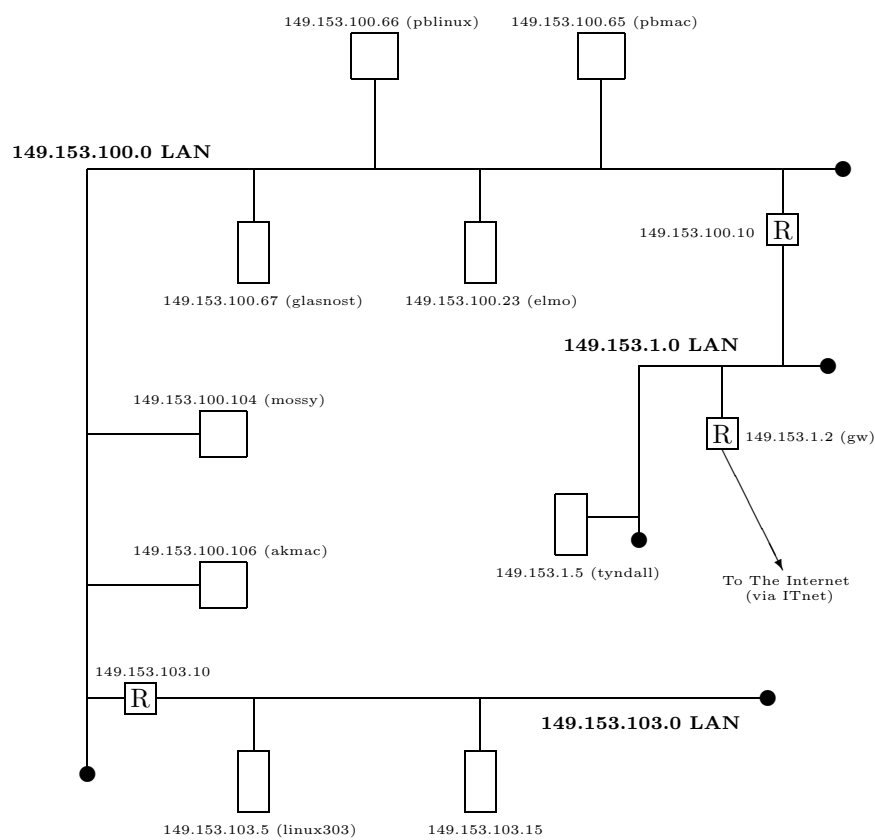


Figure 5: How EtherSnooper Works

Figure 6: *UDP/IP Fragmentation*Figure 7: *TCP/IP Fragmentation*

Figure 8: *The Network Employed*